

TOUCH & HOLD SOCKET SQUARE

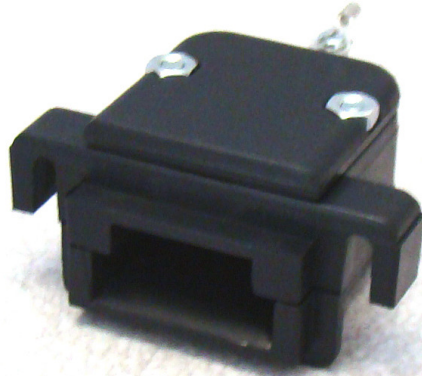
Description

This Touch & Hold Socket Square is a variation of the popular oval shape Touch and Hold Socket, more suited for outdoor applications. The Socket provides the electrical contact for the transfer of data to and from the DALLAS family of iButtons. The socket is ideal for applications that require the iButton to be connected for more than just a momentary touch. The socket is recessed for flush mounting to a panel with minimum external exposure, to make it more robust and secure for both indoor and outdoor applications. Once the iButton is inserted, it latches to give a continuous electrical contact.

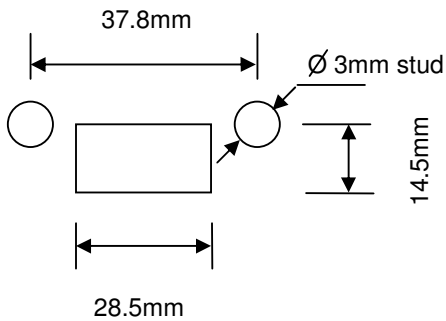
The socket is designed for the DALLAS iButton F5 MicroCan package, attached to a plastic key ring. Note that no LED version of this socket is available.

Part Number:

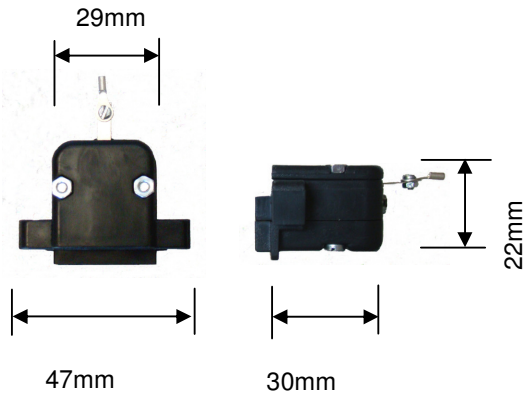
Touch & Hold Socket Square



Panel Cut-out



Dimensions



The manufacturer reserves the right to change specifications without prior notice



29 Galaxy ave., Linbro Business Park, Sandton, South Africa
P.O. Box 774, Wendywood, 2144
Tel: +27 11 608-1121 Fax: +27 11 608-1127
e-mail: sam@telbit.co.za

