

## CUSTOMER INTERFACE UNIT (CIU) TO PWC100 & PWC200 PREPAID WATER CONTROLLER

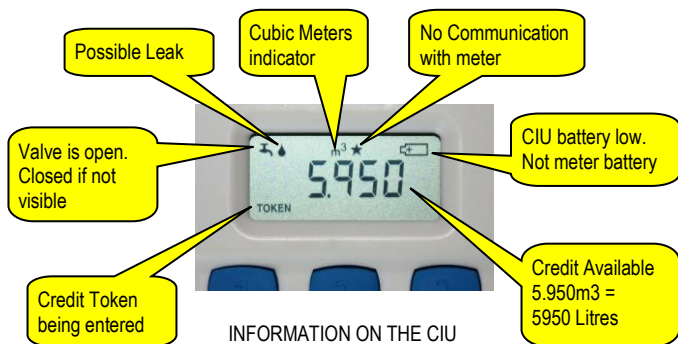
The Customer Interface Unit (CIU) is wall-mounted inside the consumer house, linking up with the PWC100 (Prepaid Water Controller) or PWC200 via secure bi-directional encrypted radio communications link. The CIU indicates the credit remaining on the meter and facilitates the entering of 20 digit purchased credit tokens. The CIU refreshes itself automatically every hour or on demand. A series of Short Codes are available to assist the consumer in managing his water and be more aware of his water usage patterns.

The LCD display rotates every ten seconds between two screens, with a conditional 3<sup>rd</sup> screen. The first screen indicates the type of credit that is being consumed, i.e. paid credit, Free Basic Water, Life Line, etc. The second screen indicates the volume of water available in cubic meters (m<sup>3</sup>). The third screen is only displayed if any additional message needs to be displayed, such as an error code, possible leak, battery low or meter locked.

Optionally the CIU is fitted with an additional radio transmitter sending diagnostic data from the meter over the Sigfox network to the Skyview Remote Monitoring platform.



PWC CUSTOMER INTERFACE UNIT



INFORMATION ON THE CIU

### Features

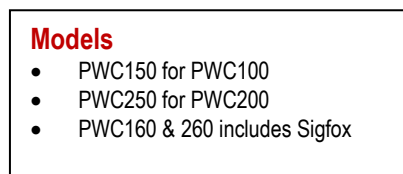
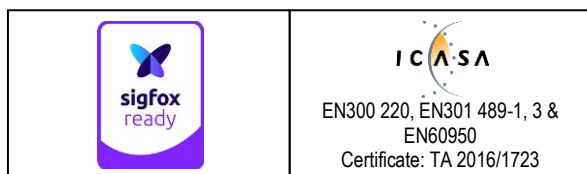
- **Sigfox Ready**
- **Icons indicates Valve Status, Water Leak & Battery Low**
- **STS Prepaid Water Credit Tokens**
- **Credit Low indication**
- **Wall mounted**
- **Secure Encrypted Communications**
- **Keypad Lockout**
- **Up to 5 year Battery Life**
- **User Replaceable Batteries**

### Specifications

- Large 1.5" LCD with user friendly icons
- Dimensions: 78mm(w) X 142mm(h) x 21mm(d)
- Radio Frequency: 868MHz, GFSK modulation
- Radio range to PWC up to 500m line of sight
- Antenna Type: Internal Antenna
- Wall mounted
- Wall plugs/screws or double sided adhesive tape
- Dust / Water Resistant Rating: IP52
- Operating Temperature -10 °C to 55 °C
- User replaceable battery with up to 5 year life
- Battery Type: 2 x AA Size Alkaline
- Silicon pushbuttons with tactile feedback

### Water Management Tools using available Short Codes

- Credit type being delivered Paid Credit, Free, Lifeline, etc.
- Loading of prepaid water tokens
- View unique Prepaid Number in order to purchase credit
- View electronic meter totalizer reading
- History of last 10 tokens with credit value and date stamp
- View consumption for the current day and month
- View average monthly consumption
- Monthly consumption history over the last 3 months
- Warns of possible water leaks on property
- Close the meter, stopping water delivery when not at home
- Resettable User Totalizer for event specific measurement
- View total credit-to-date and consumption-to-date totals
- Activate Emergency Credit



REV4