

**Design, Development and
Manufacture
of Electronic Equipment**

The Locked Bell System manufactured by TELBIT, is the system of choice at most mining houses over the last 30 years. The Signalling System uses the industry standard 3-wire system, with B+,B-, and BC (Bell Common).Messages are relayed between Onsetter, Banksman and Driver in the form of bells that ring according to the numbers/code pressed.

Manufactured from 2mm stainless steel, the unit incorporates the new generation Mitronix electronic card that follows the 150mSec pulse duration, with 300mSec pause between messages. In case of emergency the red Long Ring pushbutton rings immediately when pressed, overriding all messages, and continues to ring for 5 seconds after release. Should the On/Off Key be removed during operation, the message is completed. When the Key is removed the card powers down completely, leaving no standby electronics powered, improving the reliability of the system.

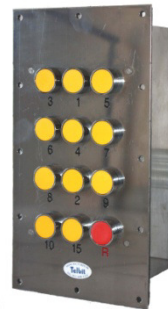
Two types of pushbuttons are available. The standard Telemecanique push button, or the newer IP68 waterproof contactless Piezo pushbutton. The Piezo buttons have no moving parts, making use of a piezoelectric material and are compatible with Mitronix and older Scitron cards. The buttons can be supplied in the standard 12 button, 13 button with additional 11, 12 or 13 code, or the 15 button arrangement with additional 4+1, 3+3+3 and 4+2 codes.

The On/Off switch can be chosen from a variety of switch manufacturers, such as the PP-, Castell-, Fortress- or Kelpi Range. Telbit also manufacturers the robust Magnetic Switch, where the Key fits magnetically to the switch. The Switch has no moving parts, and is water proof, available in T1,T2 & T3 key combinations.

The unit also incorporates IP68 sealed LED type red and green robot lamps, to indicate the brake interlock status. The Onsetter unit is equipped with a loud 105dB electronic sounder, where the Banksman unit has an additional sounder with different tone, to easily distinguish between Onsetter and Banksman ringing.



Onsetter with Piezo buttons



Telemecanique Buttons

Features

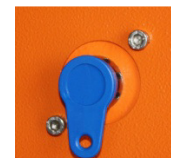
- Banksman with additional sounder
- Engraved numbers of S/steel fascia
- IP68 Sealed LED type, replaceable robot lamps
- Completes message regardless of Key being removed
- No standby circuit required on electronics
- Loud 105dB Sounder
- 20mm knock-out holes for cable entry
- Lockable enclosure
- Compatible with proven Scitron electronics
- 4+1,3+3+3,4+2 button options on Mictronix card
- Compatible with Telbit Signalling Recorder



Mitronix



Magnetic Switch



Magnetic Key



Piezo Button

Specifications

Supply Voltage	32VAC/DC or 110VAC
Dimensions	780mm(H) x 240mm(W) x 180mm(D)
Mounting	Wall mount with wall plugs/rawlbolt
Button Arrangement	Standard 12, 13 or 15 button
Button Type	Piezo or Telemecanique
Enclosure	Powder coated 2mm Stainless Steel
Electronics Card	Mitronix or Scitron Compatible

Telbit reserves the right to change specifications without prior notice.

REV2